



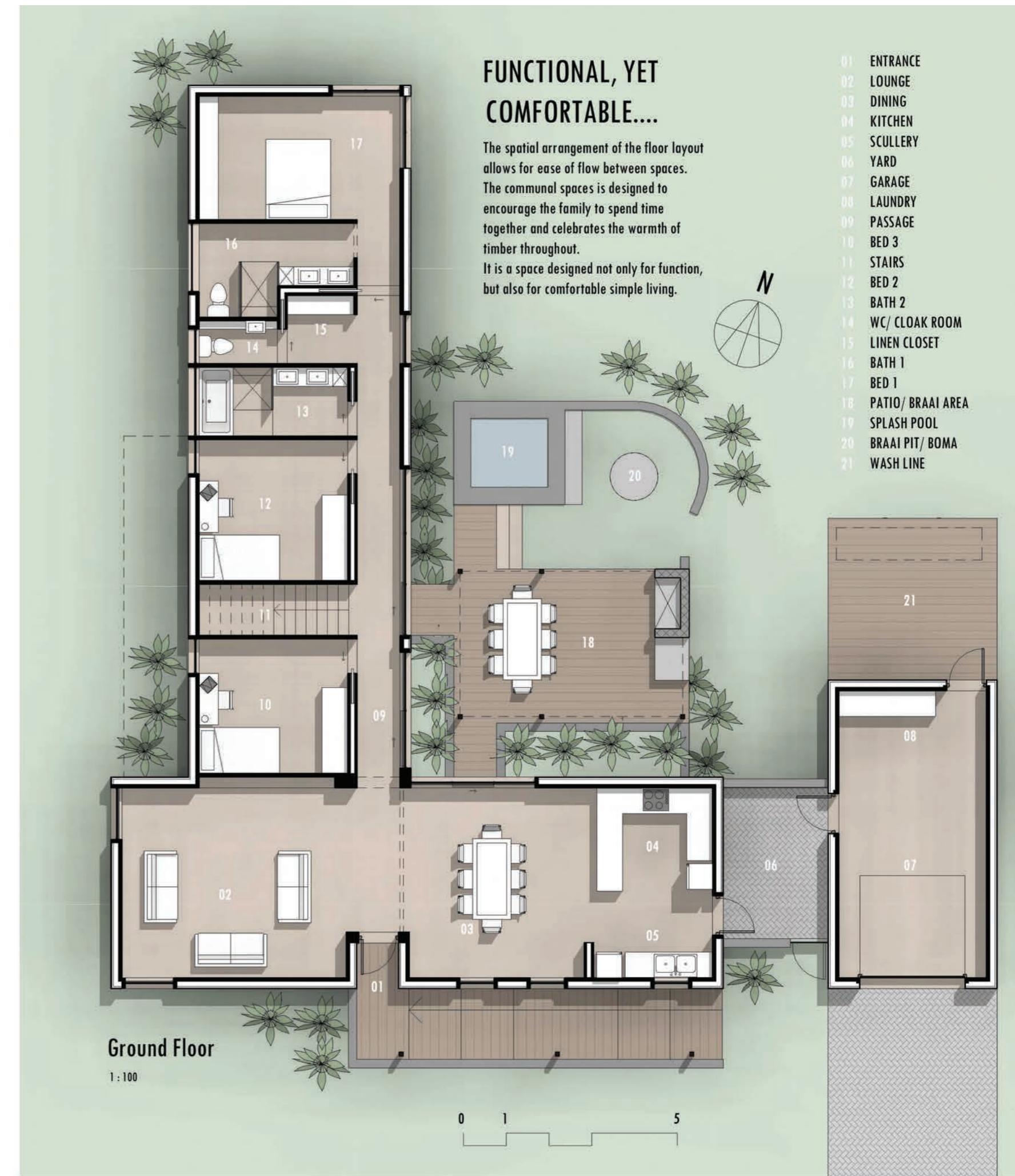
Nerine de Klerk (Joubert)

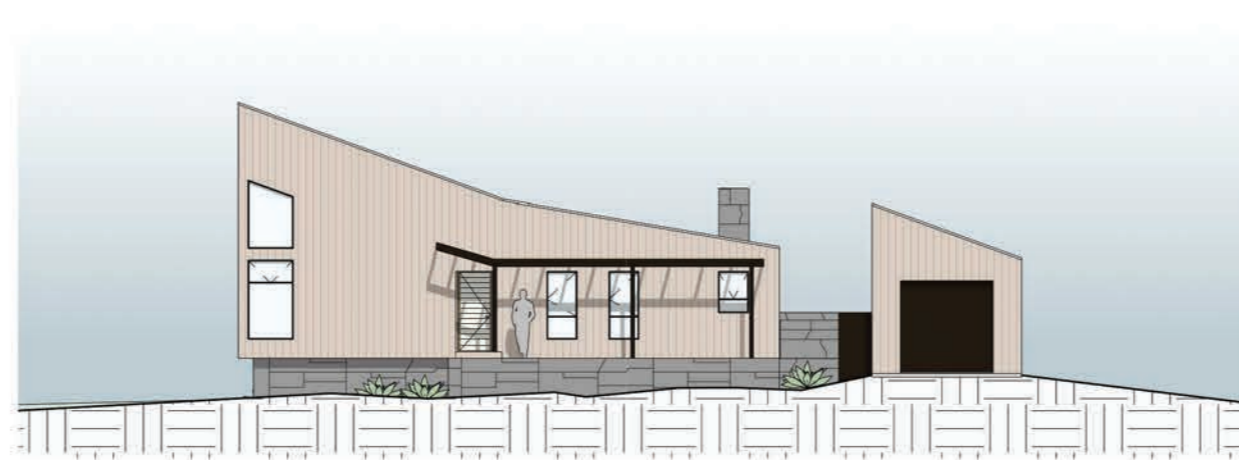


A SIMPLE RESPONSE TO SIMPLE NEEDS....

A family home needs to be functional, simple and satisfying. It needs to be a space where you can recharge and destress. The years we spend together as a family is fleeting and time should be used to enjoy experiences and make memories & therefore we do not need mansions that require excessive upkeep, that makes us feel we need to fill it with items that keeps us from living our lives. The design provided for John & Amy and their three children provides simple responses for simple needs.

This design is modern, comfortable, sustainable and can be affordable. It is a space that enhances daily mundane tasks, because there is only space for what is needed. It consists of a simplistic L-shaped layout with a courtyard, which can accommodate any family who enjoy spending time together. The stone and timber textures provide a natural feel and this house can be successful on numerous sites located in areas such as the winelands, suburbs, near the ocean etc. which accommodates the orientation.





South Elevation

1 : 200



North Elevation

1 : 200



West Elevation

1 : 200



East Elevation

1 : 200

