

BE A PART OF THE CHANGE

WWW.TIMBER-COMPETITION.CO.ZA



WHY?

- ✓ **awake an interest** in modern sustainable Timber constructions
- ✓ we trust sustainable architecture is **the only choice** for the future
- ✓ help to **create a new network** of young people interested in sustainable building
- ✓ we love to work with young people :)





DATES & DEADLINES

15th January 2019

- ✓ design of a house with a short description (picture in horizontal format)
- ✓ will be presented at the Wood Conference in Cape Town

15th April 2019

- ✓ final projects incl. floor plan, list of windows, visualization & presentation







SUPPORT

- ✓ Consultations with a **Novatop planner** in November & February
- ✓ Regular **updates** in the download section and Q&A
- ✓ **Online support** (e-mail, Skype conferences) on request
- ✓ **Feedback** after finalizing the first design in January





INTERNSHIP

- ✓ **Invitation** letter
- ✓ Economy class **flight ticket** from Johannesburg or Cape Town
- ✓ **Visa cost**
- ✓ **Accommodation** in Prague for one week
- ✓ Visit of a CLT production
- ✓ **Date of internship**, agreed between the Winner, Prodesi Architects & Organization team





INTERNSHIP

- ✓ **Prodesi** Architects
- ✓ Specialised in **CLT**
- ✓ Family homes, Weekend houses as well as public projects
- ✓ work in close **connection with builders**

www.prodesi.cz



BE A PART OF THE CHANGE

WWW.TIMBER-COMPETITION.CO.ZA





BE A PART OF THE CHANGE

WWW.TIMBER-COMPETITION.CO.ZA





CROSS LAMINATED TIMBER CLT

- ✓ Three or more layers
- ✓ 90° angle between layers
- ✓ dimensionally stable
- ✓ visual quality of solid wood



NOVATOP

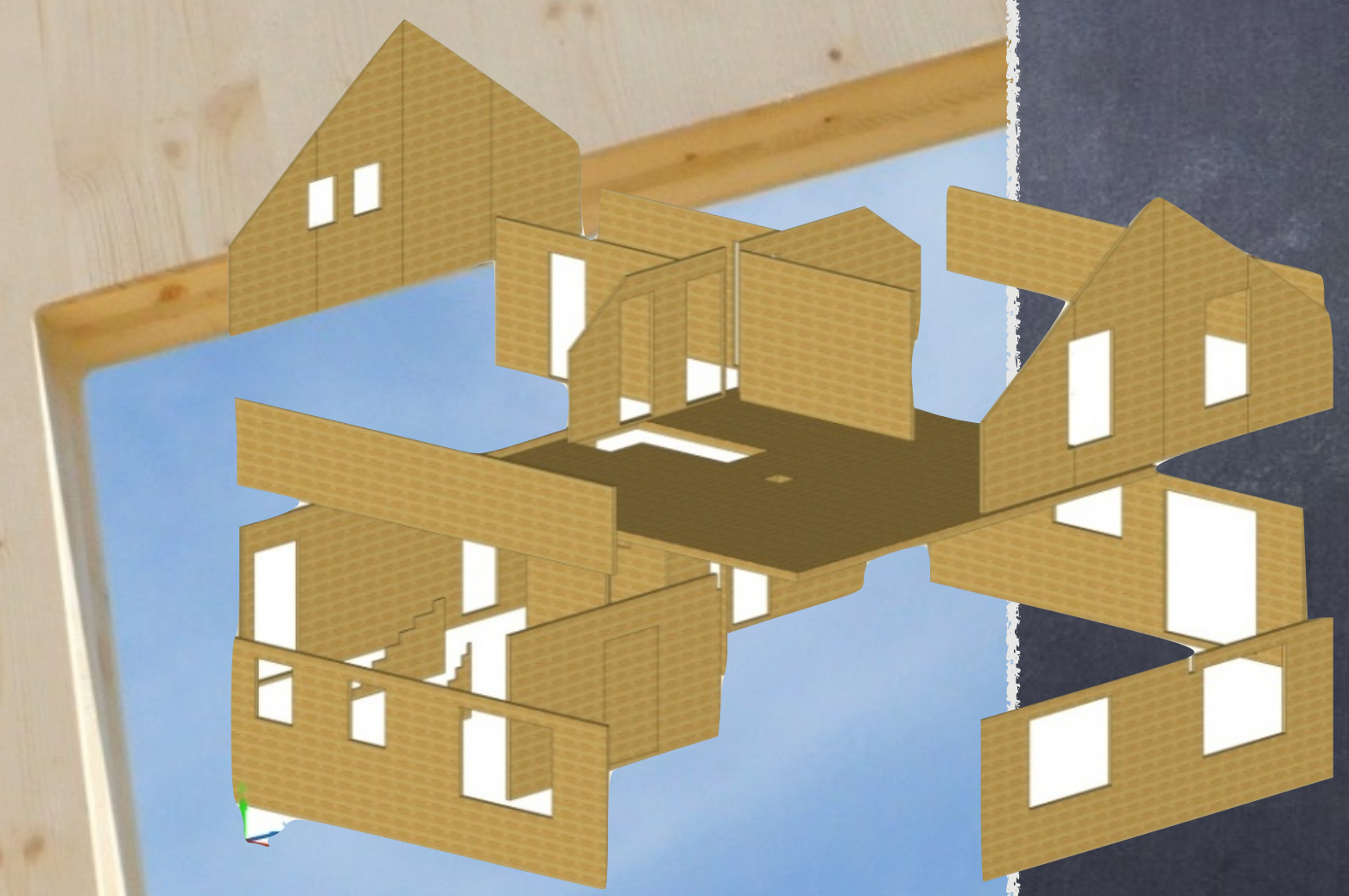
- ✓ Construction system based on CLT board
- ✓ very **quick and precise** installation thanks to prefabrication
- ✓ **visual quality** of timber in the interior
- ✓ sustainable construction, timber comes from **sustainable** forestry
- ✓ Agrément certified





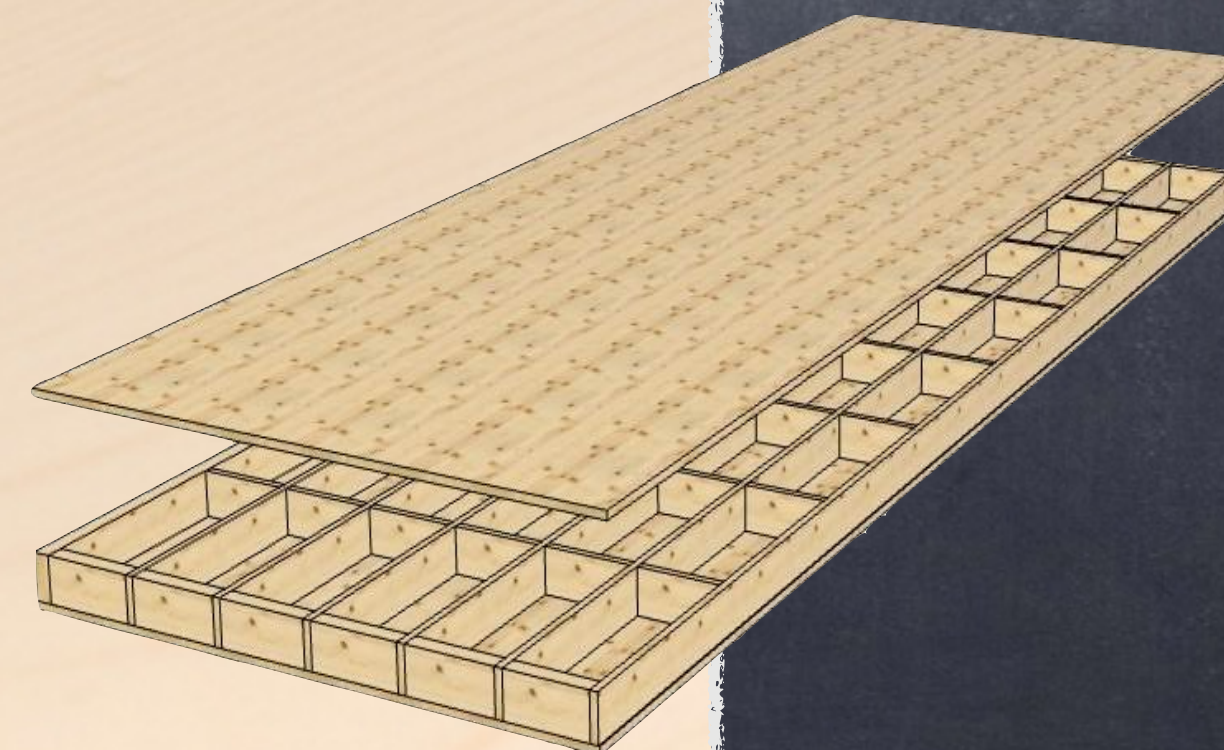
NOVATOP **SOLID**

- ✓ thicknesses 60mm, 84mm, 124mm
- ✓ dimensionally stable and firm
- ✓ precise machining
- ✓ fully prefabricated



NOVATOP ELEMENT

- ✓ For the floor and roof structures
- ✓ consist of two CLT boards and ribs
- ✓ could be fill up with the insulation directly at the production
- ✓ quick and simple installation
- ✓ very low weight and high static load capacity
- ✓ large formats up to 2,1x12m

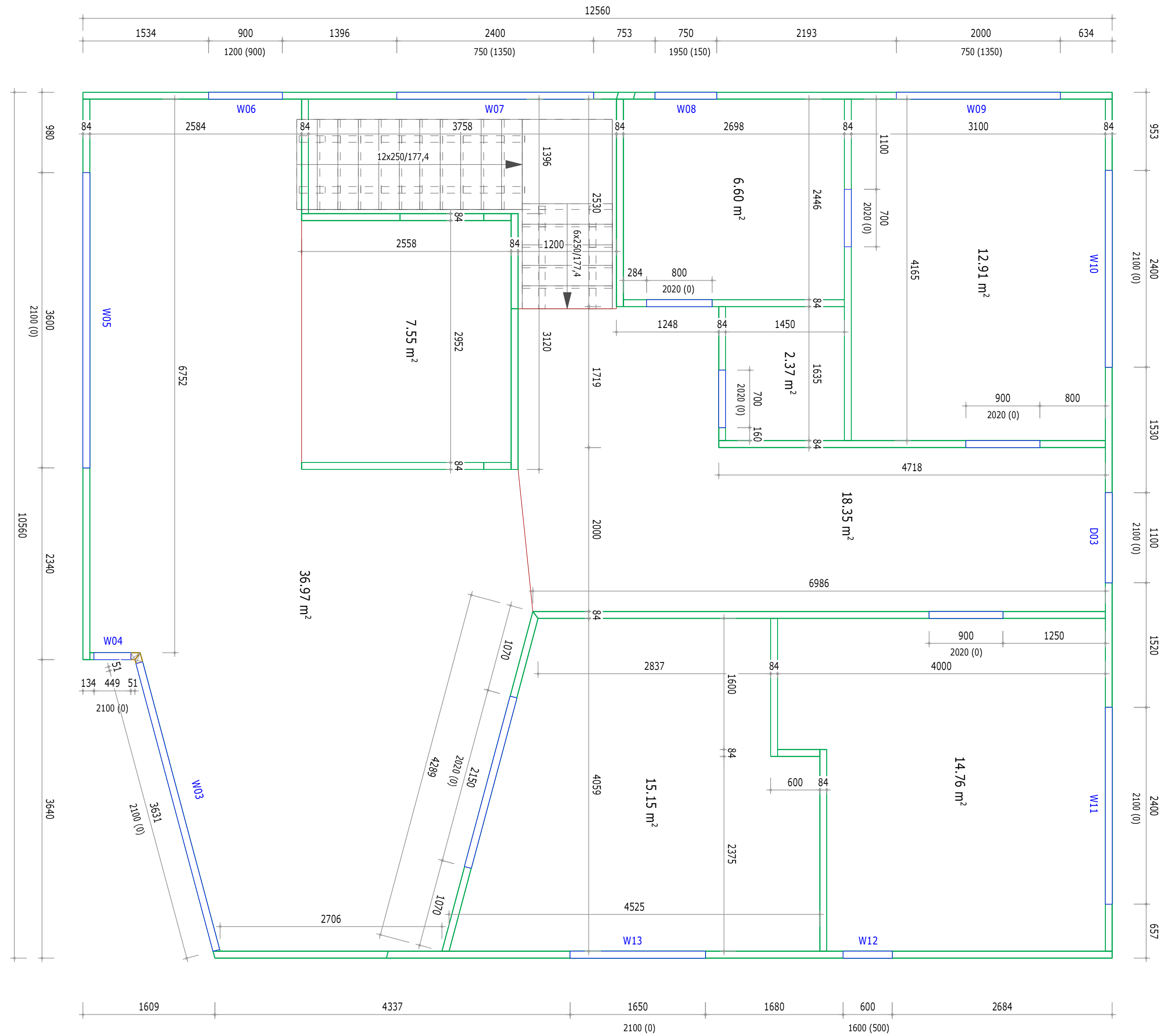




NOVATOP OPEN

- ✓ NOVATOP OPEN allow a really "OPEN" degree of prefabrication according to individual requirements
- ✓ especially for the roof structures
- ✓ consist of one CLT boards and ribs
- ✓ could be filled with the insulation directly at the production
- ✓ quick and simple installation
- ✓ large formats up to 2,1x12m
- ✓ the solution for diffusional open roofs and walls

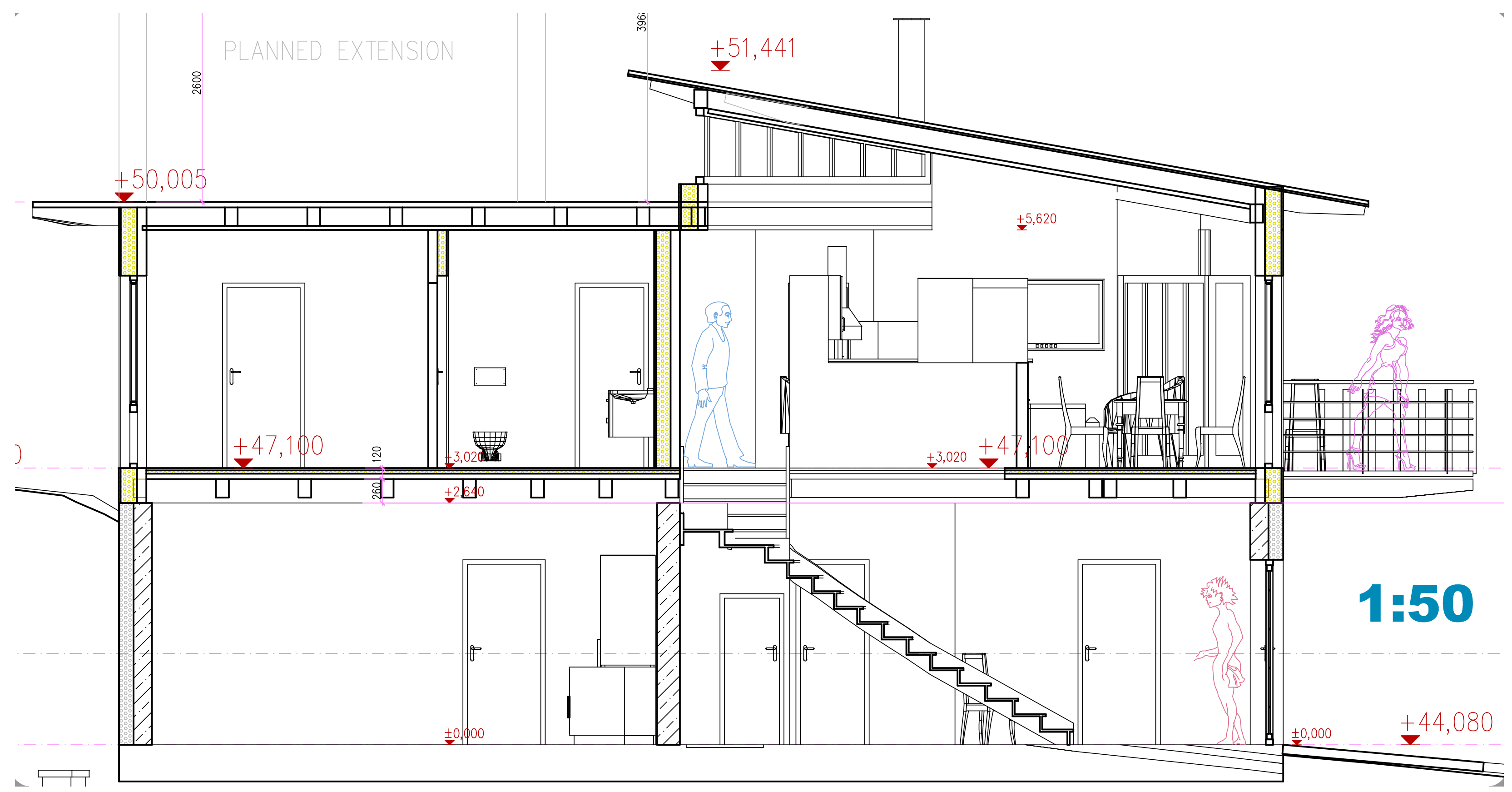




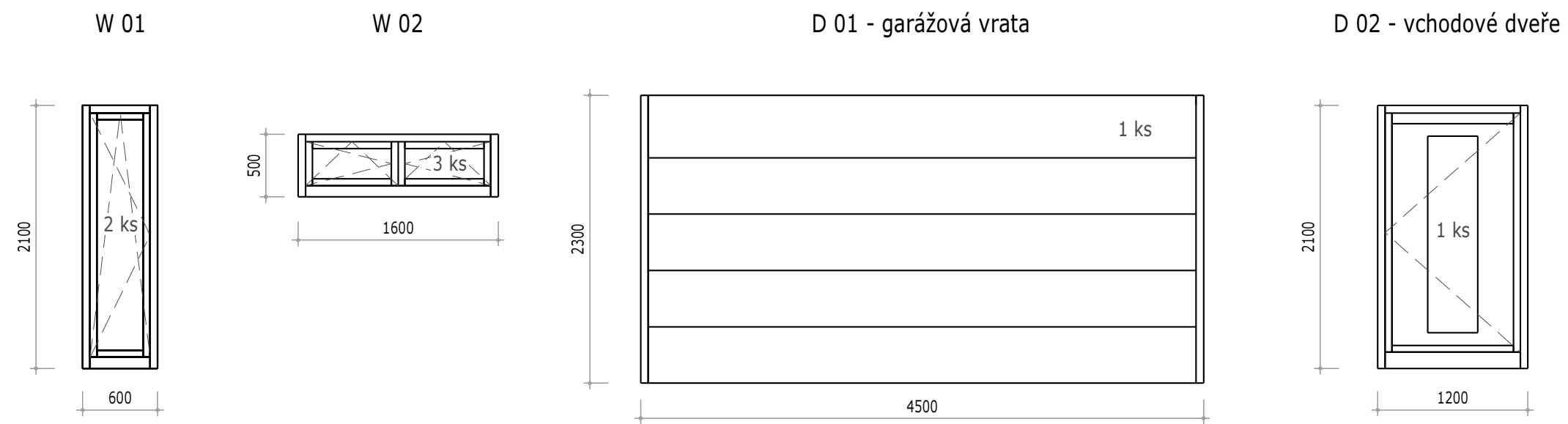
FLOOR PLAN OF EACH FLOOR



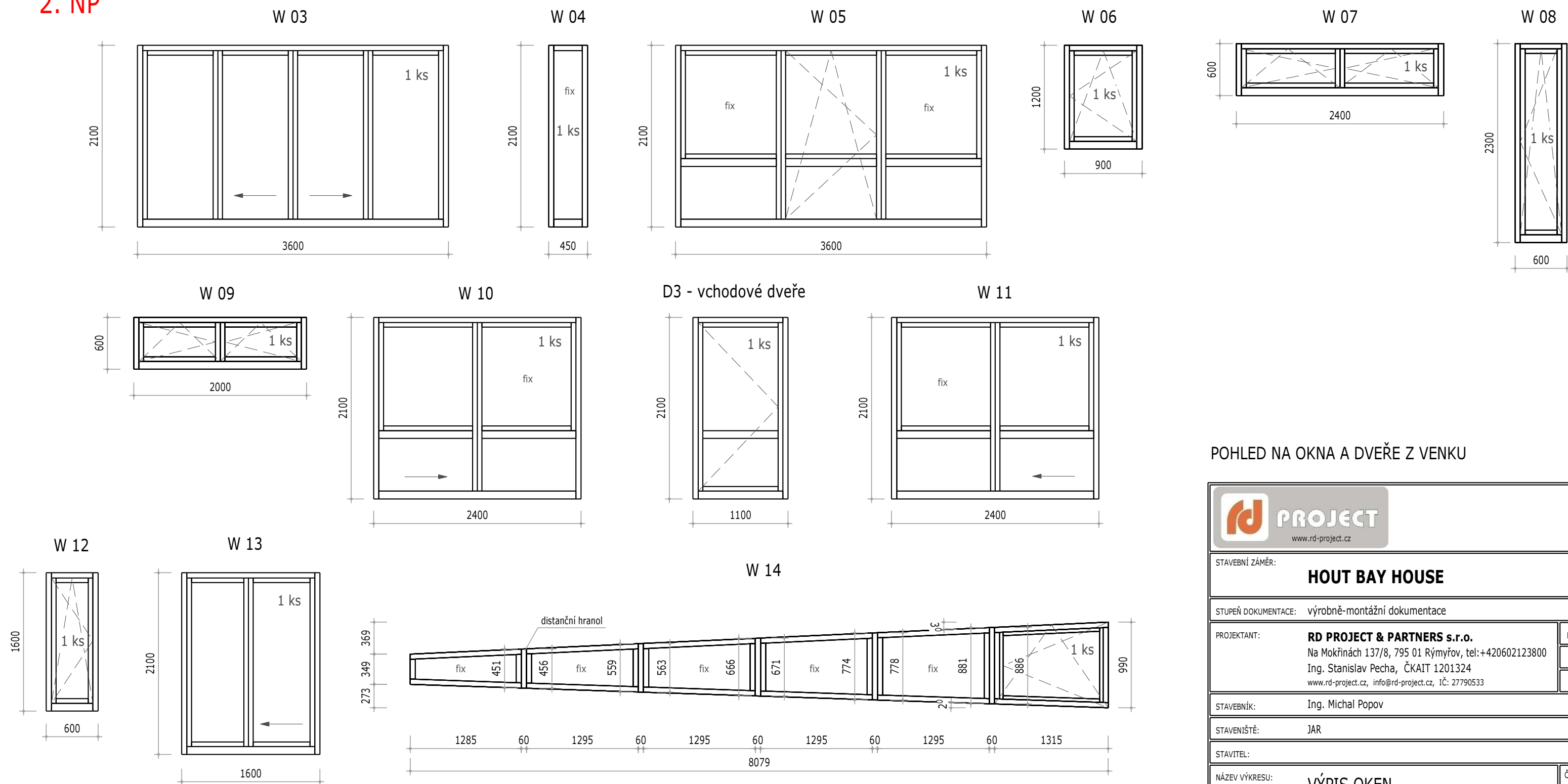
ELEVATION CUTS




1. NP



2. NP



POHLED NA OKNA A DVEŘE Z VENKU

| | |
|--|--|
|  | |
| STAVEBNÍ ZÁMĚR: HOUT BAY HOUSE | |
| STUPĚŇ DOKUMENTACE: výrobně-montážní dokumentace | |
| PROJEKTANT: RD PROJECT & PARTNERS s.r.o. Na Mokřinách 137/8, 795 01 Rýmyřov, tel: +420602123800 Ing. Stanislav Pecha, ČKAIT 1201324 www.rd-project.cz, info@rd-project.cz, IČ: 2790533 | DATUM: 4/2015 MĚŘÍTKO: 1:50 FORMÁT: A3 |
| STAVEBNÍK: Ing. Michal Popov | |
| STAVENÍŠTĚ: JAR | |
| STAVITEL: | |
| NÁZEV VÝKRESU: VÝPIS OKEN | ČÍSLO VÝKRESU: M 03 |

LIST OF WINDOWS & DOORS





THANK YOU FOR YOUR PARTICIPATION